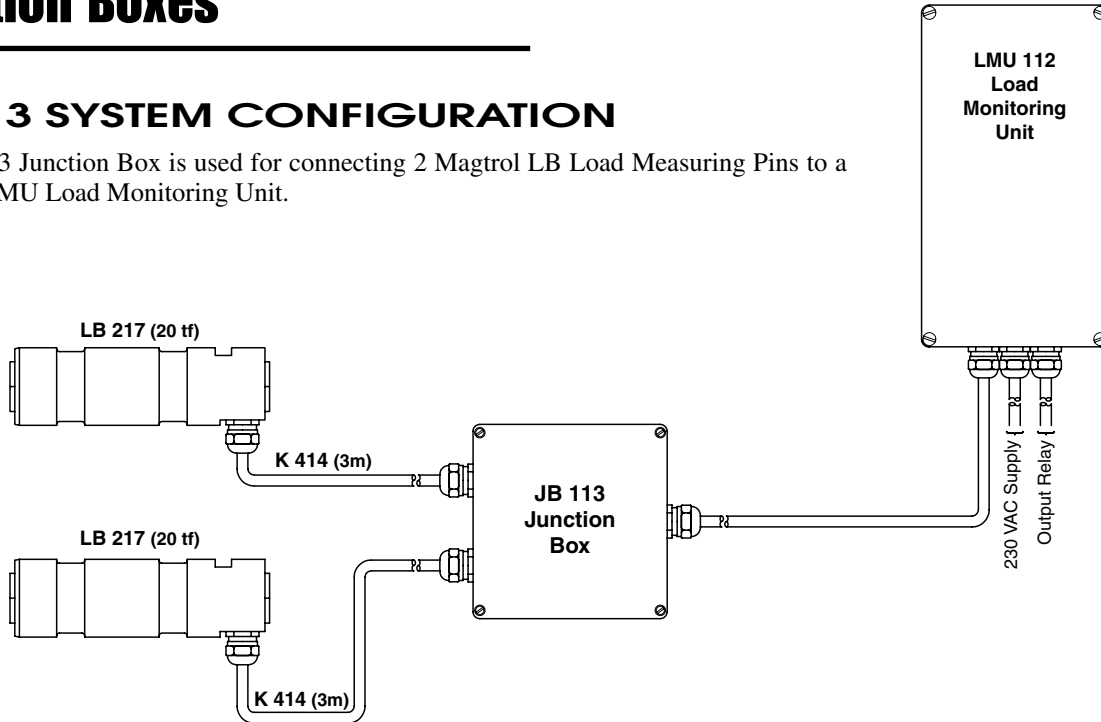


JB 113 and JB 114 Junction Boxes

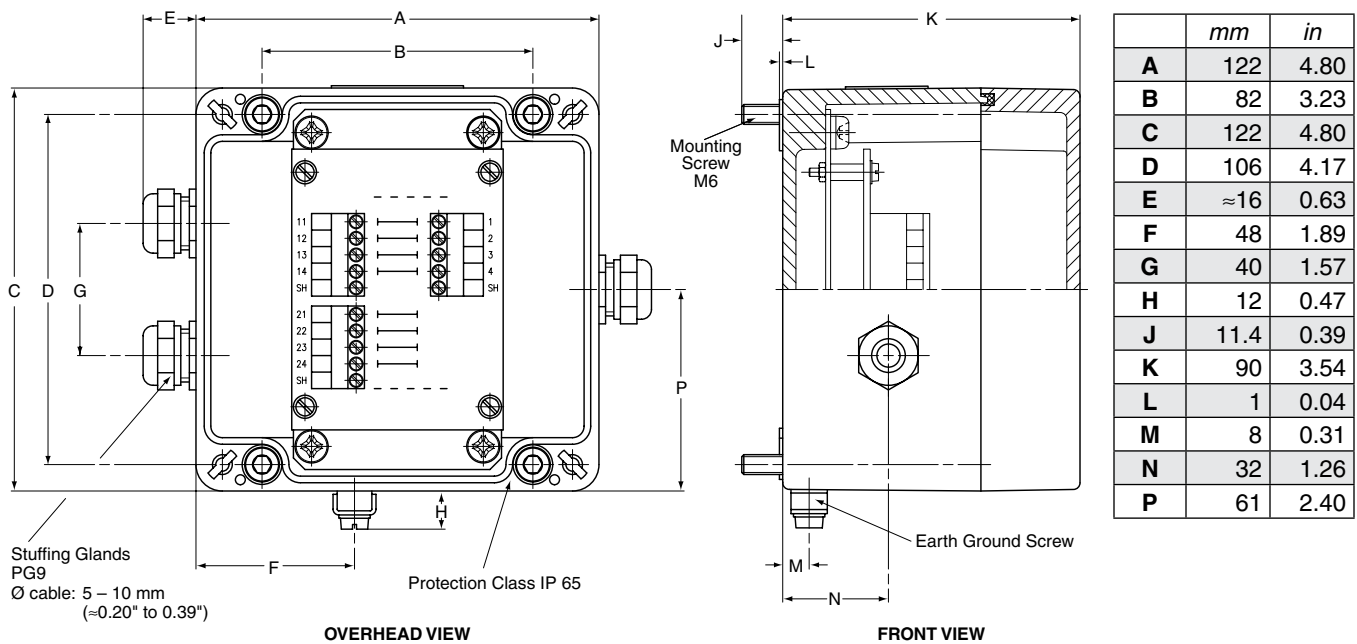
JB 113 SYSTEM CONFIGURATION

The JB 113 Junction Box is used for connecting 2 Magtrol LB Load Measuring Pins to a Magtrol LMU Load Monitoring Unit.



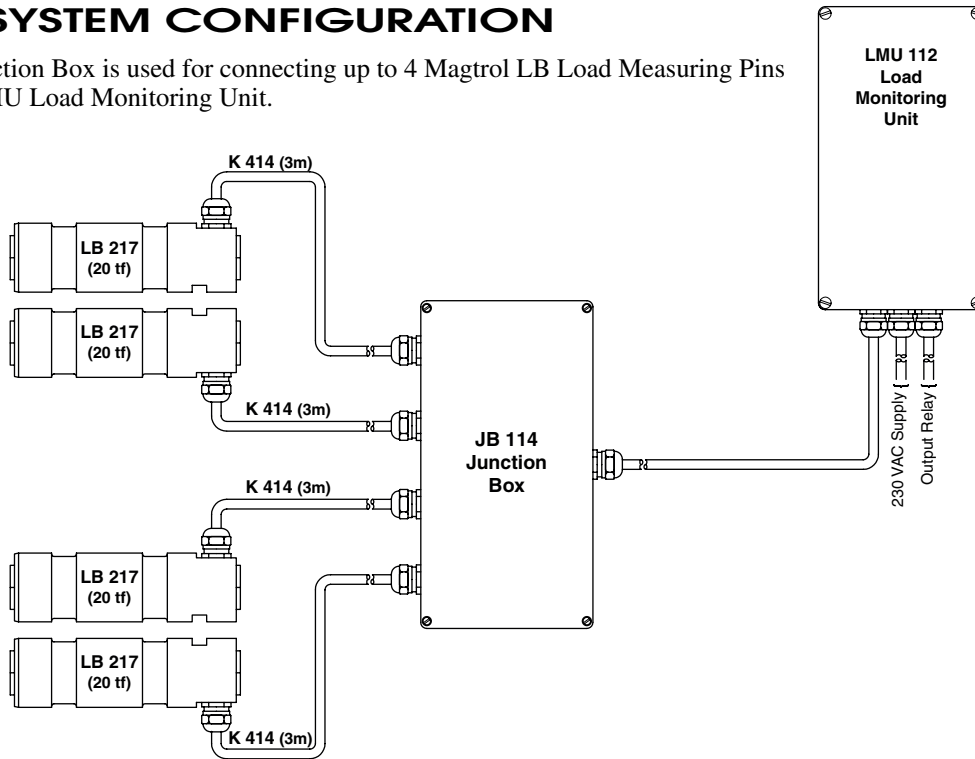
JB 113 DIMENSIONS

NOTE: Original dimensions are in Metric units. Dimensions converted to English units have been rounded up to 2 decimal places.



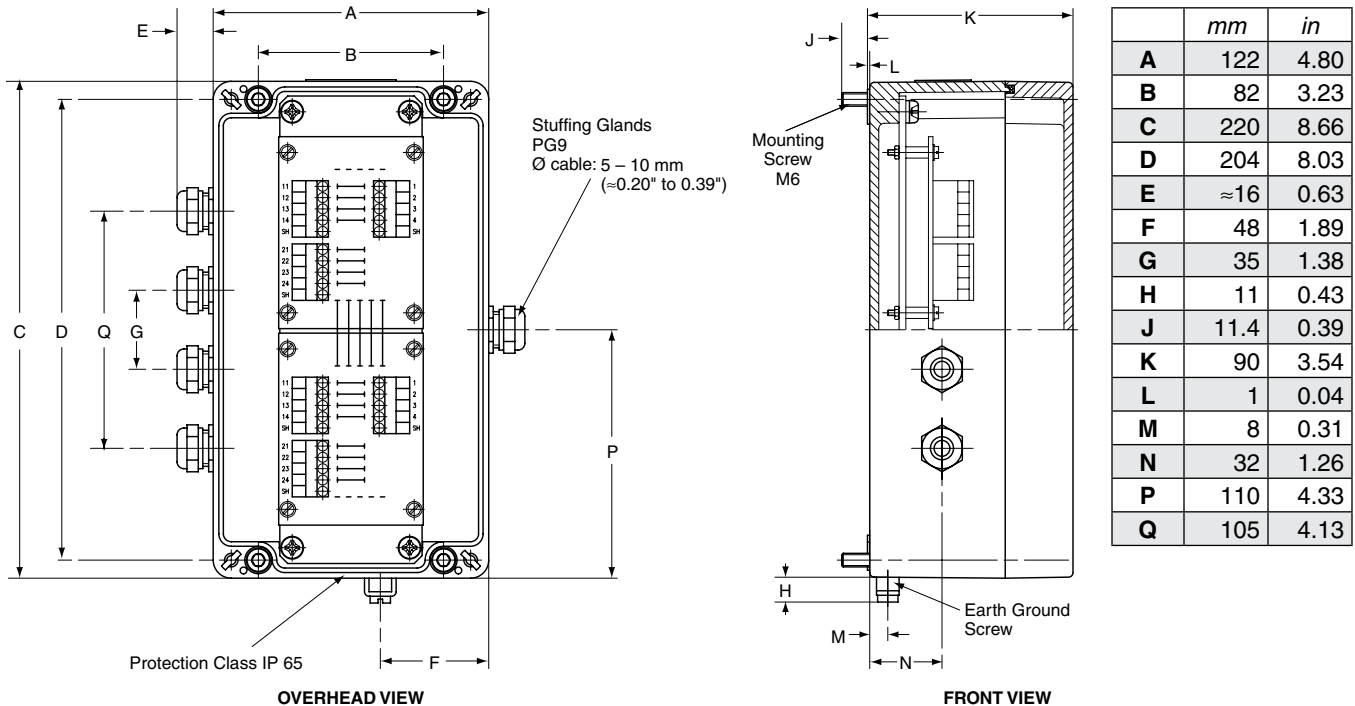
JB 114 SYSTEM CONFIGURATION

The JB 114 Junction Box is used for connecting up to 4 Magtrol LB Load Measuring Pins to a Magtrol LMU Load Monitoring Unit.



JB 114 DIMENSIONS

NOTE: Original dimensions are in Metric units. Dimensions converted to English units have been rounded up to 2 decimal places.



Due to the continual development of our products, we reserve the right to modify specifications without forewarning.



www.magtrol.com

MAGTROL INC

70 Gardenville Parkway
Buffalo, New York 14224 USA
Phone: +1 716 668 5555
Fax: +1 716 668 8705
E-mail: magtrol@magtrol.com

MAGTROL SA

Centre technologique Montena
1728 Rossens/Fribourg, Switzerland
Phone: +41 (0)26 407 3000
Fax: +41 (0)26 407 3001
E-mail: magtrol@magtrol.ch

Subsidiaries in:

Great Britain
Germany • France
China • India

Worldwide Network
of Sales Agents

